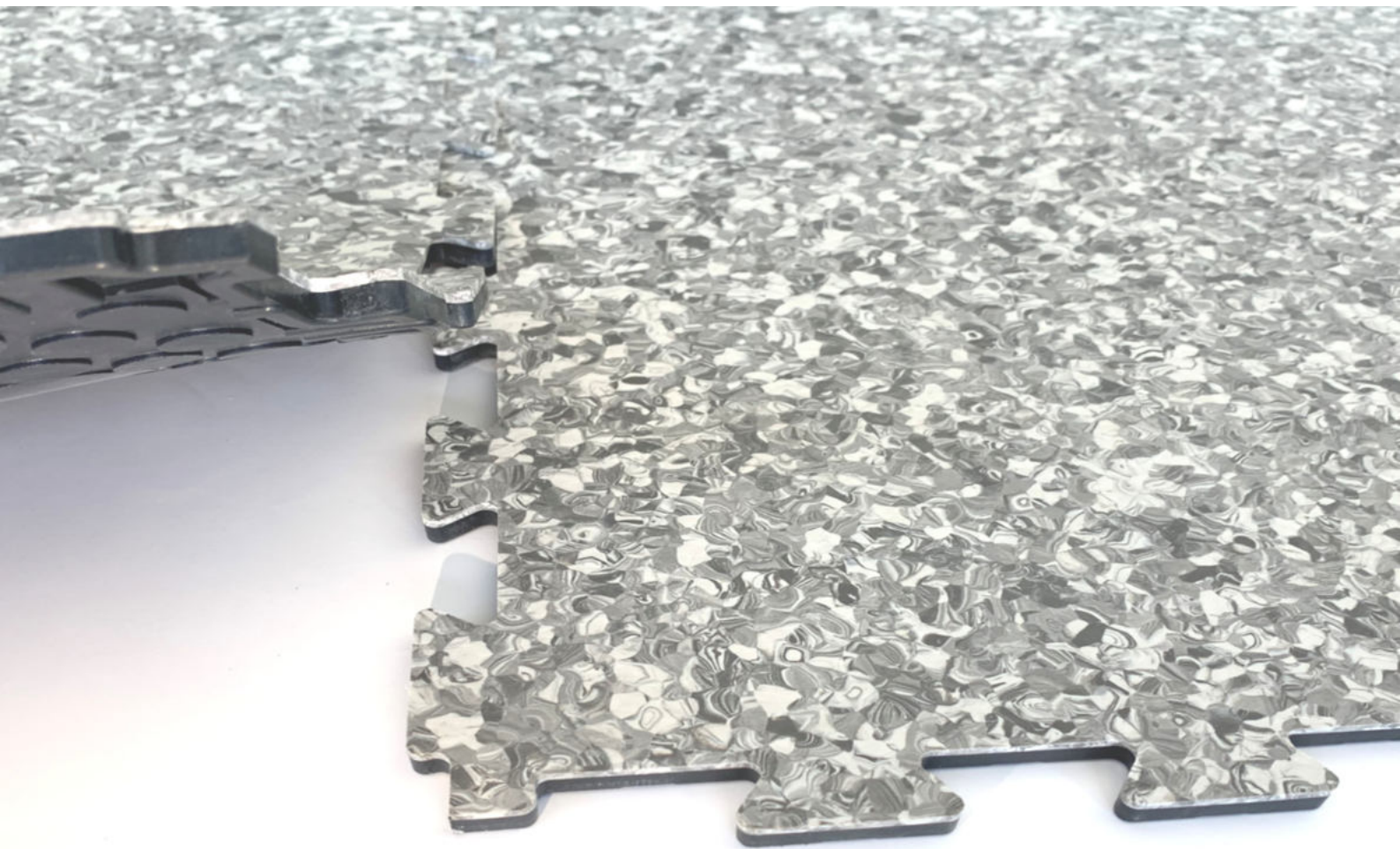


ib  **tac** [®]

IboColor





Flooring!!!

This is what we do

Thanks to a unique manufacturing process, Ibotac® can deliver extremely robust and resistant floor.

IboColor is a very robust, diffusion-open and multi-layer industrial floor, which can withstand up to 40 tons of heavy load in glued version.

With the certified production process, **Ibotac®** improved the multilayer structure of **IboColor**. In combination with a **fiberglass cross-linked back** we achieve **outstanding dimensional stability!**

The particularly resistant industrial floor tiles can usually be glued or loosely laid without subfloor preparation, even in the presence of residual moisture. Even shrinkage cracks that occur are unproblematic.

To the surface is applied a PUR sealant. It is designed for high traffic, where hygiene and resistance are important. Optimal protection against scratches and increases durability.

IboColor is ideally suited as a covering for extremely stressed industrial areas and in store fitting.



Sound insulation



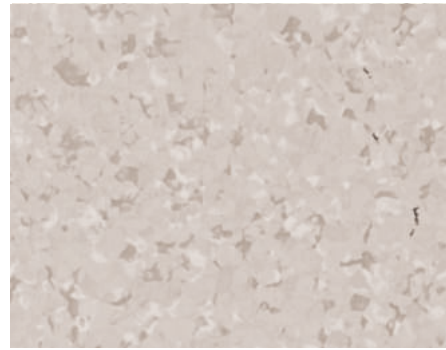
Slip resistance

Better impact sound insulation and less noise in rooms with a high volume of visitors. This is guaranteed by IboColor with its sound-absorbing back. **(9 dB)**

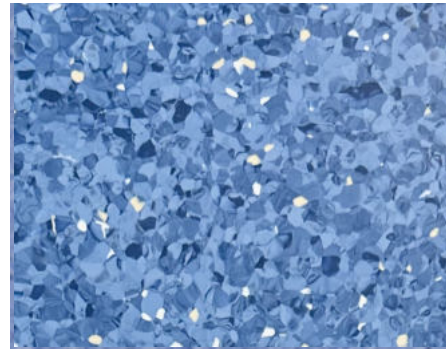
Our floors have been extensively tested under critical conditions. The IboColor has a **slip value of R10** (pendulum test and "inclined plane").



ICO 25
66 x 33 cm



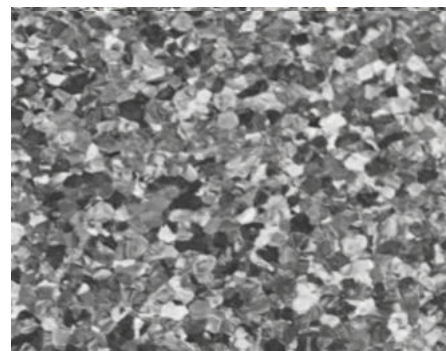
Light beige 619



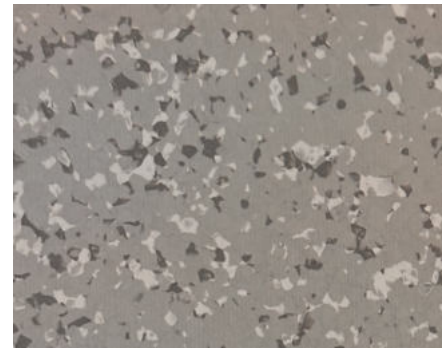
Blue 112



Light grey 322



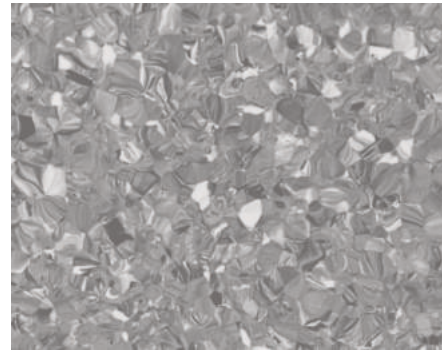
Grey white 009



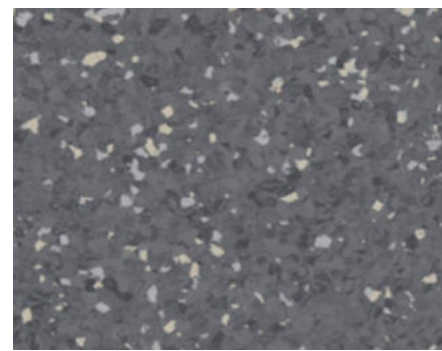
Beige 612



Green 677



Grey 320



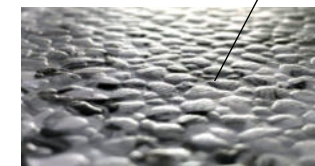
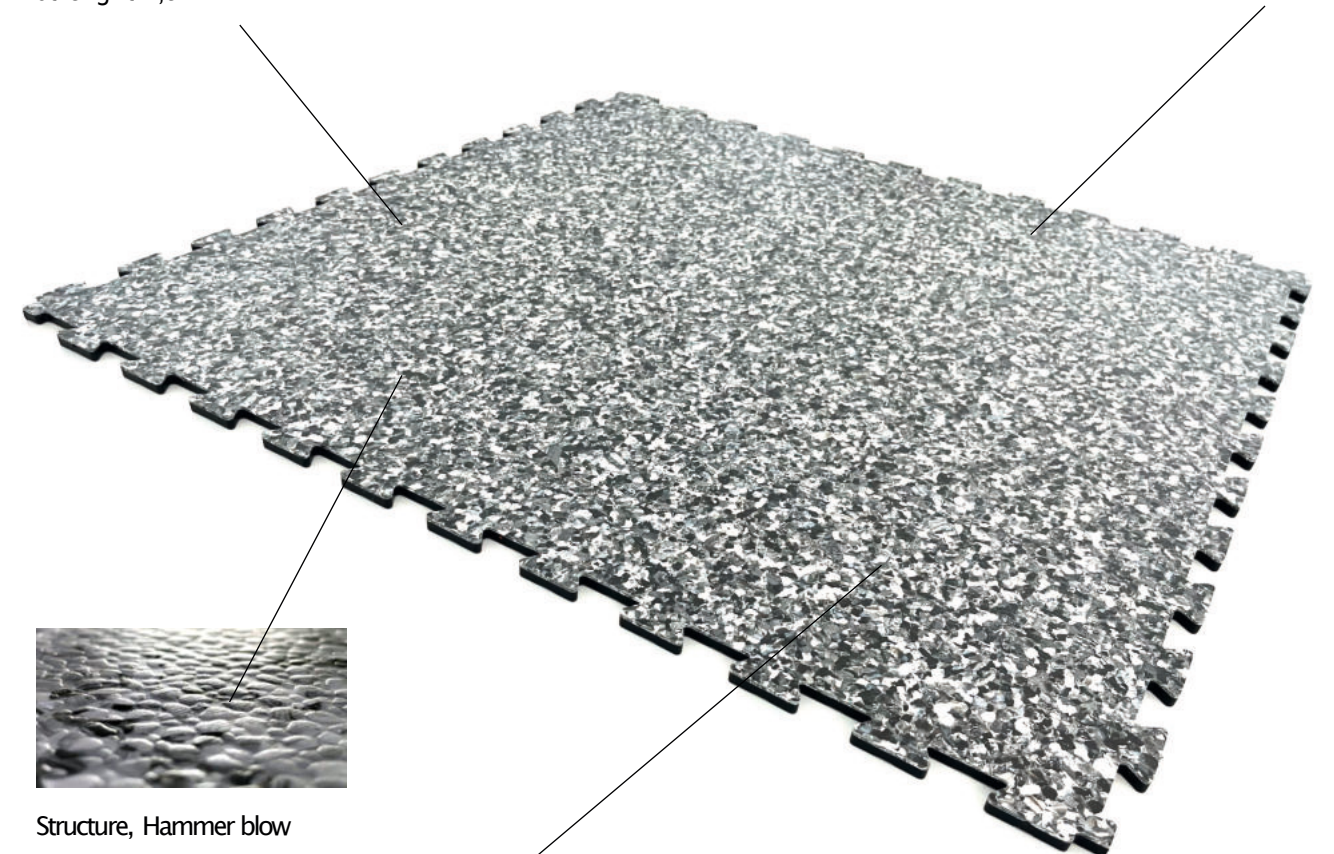
Dark grey 674

IboColor

The industrial floor **IboColor** is particularly suitable for areas with heavy traffic. This product combines quick installation, easy maintenance and attractive design.

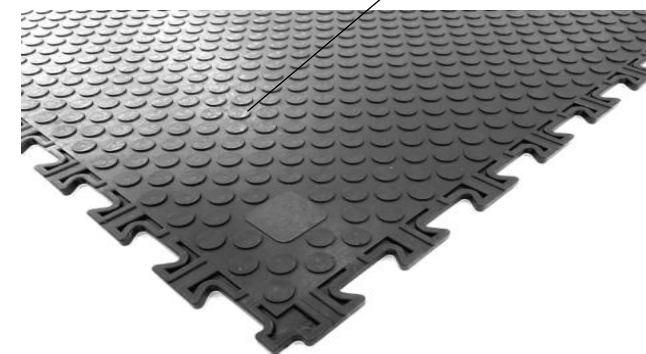
Format 615 x 615 (effective area 595 x 595 mm)
strenght 7,5 mm

grey 009



Structure, Hammer blow

Steam back (drainage knobs)



This means that any rising damp can deviate to the walls.

FEATURES

- Quick and easy installation during operation, no empty space, significant shortening of the construction time and can be used immediately
- Can be taken up and relaid, easy to repair
- PUR sealing on the surface
- Heavy duty for loose laying, (lift trucks, pallet trucks etc.)
- High sound insulation, 9db
- Easy cleaning and maintenance, recyclable
- Fiberglass cross-linked backing



Sustainability

For our planet

Ibotac processes at least 85% recycled PVC. Ibotac products can be 100% recycled.

Ibotac is actively committed to environmental protection with a comprehensive package of measures. In addition to customer satisfaction, environmental protection is a clear focus in all areas of our value chain. Development, production, distribution, services and marketing are guided by our three sustainability principles.

These principles are based on the Greenhouse Gas Protocol:

Avoid-Reduce-Compensate

Intelligent Sustainability



We offer products that can be installed without adhesives, eliminating this otherwise polluting factor and guaranteeing 100% reuse. At the end of the useful life, we can collect and recycle the tiles.



The future lies in the circular economy

The circular economy is an important part of the solution to the resource problem, as it links economic and ecological opportunities. In a sustainable circular economy, materials and substances are to be used in such a way that they provide benefits in products over as long a period as possible, are recovered for future production processes and thus cannot be irretrievably lost as waste. Recycled resources thus contribute longer and more frequently to value creation within the economic system - without polluting the environment by extracting new raw materials.



Loadings

Due to the certified construction with a **fiberglass cross-linked back**, we achieve extremely high dimensional stability. This means that it can be laid mostly floating and without gluing to the subfloor. Even with this installation, **IboColor** is loadable with **forklift trucks, pallet trucks etc.**

Repair

Repair is quite simple to perform. Take out the damaged tiles and replace them with new tiles. The advantage is that you always have the same look, even repaired spots are not visible. Of course, the installation takes place without dust formation and without drying time, so that the IboColor can be walked on and loaded directly.



Undergrounds

IboColor can be laid loosely on various substrates, e.g. concrete, screed, ceramics, tiles etc.. In addition, **IboColor** has a significantly reduced conversion time. Just as easily you can pick up the tiles and lay them somewhere else. The condition is that the subfloor is reasonably solid and straight. With ceramic tiles there is no problem with the formation of cracks or narrow joints.

Loose laying

The tiles are laid loosely (without gluing to the subfloor), which in practice means that the floors can be laid very quickly and without costly preparatory work, disposal costs, without noise and with only minimal interruptions to operations. In addition, the floor can be picked up and relaid again and again. In other words, a sustainable investment.

Laying Instruction IboColor

Check underground:

The substrate should be permanently dry, solid, level and free of cracks. In the case of bonding, there must be no contamination by e.g. oils and greases. If there are impurities, there is a possibility of bonding on a stabilizing base.

Climatic conditions:

Ibotac IboColor must be stored in the object for at least 24 hours before installation. Preferably, the boards should be taken from the pallet and laid out in small stacks (4-6 boards). Floor temperature must not fall below 15°C and air temperature must not fall below 18°C before, during and up to 7 days after installation. Excessively high temperatures must also be avoided. These affect the dimensions of the slabs and possible reaction times of building materials (adhesive, filler, etc.).

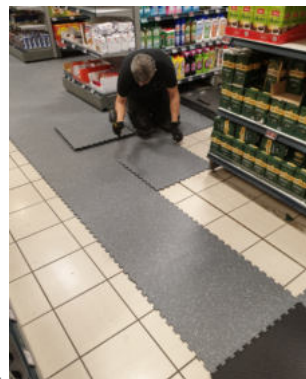


Installation on heated undergrounds:

Ibotac IboColor is suitable for laying on floor heated constructions, if the surface temperature does not exceed 27°C. In this case, the heating must be kept in operation for three days before, during and up to seven days after installation with a surface temperature of 18 - 22°C.

Underground preparations:

IboColor can be laid on undergrounds that are uneven. Holes, edges and wide joints/cracks should be filled or trowelled with suitable filling compounds. Nevertheless, in individual cases there may be higher offsets at the interlocking or the formation of unevenness on the surface of the covering. If this is not acceptable, the substrate must be prepared in accordance with VOB DIN 18202.

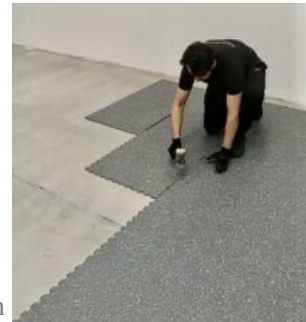


Laying:

After marking a straight line to align the surface, accurately lay out one or maximum 2 rows along this line. Drive in the dovetail joint with a rubber mallet or join/roll with a suitable pressure roller.



Starting from one side of the room, lay out 2 rows at a time at the already laid panels. Around obstacles (machines, columns, etc.), a connection with plates should be laid to align and maintain the laying grid. On rising components (walls, columns, machines, etc.) the cuts can be made with the help of e.g.: Plate punch or jigsaw. A distance of approx. 8 mm must be maintained from these components



Required Laying tools:

e.g.: Rubber mallet, ruler, pencil, jigsaw, hot air gun, plate punch ...



General:

The execution of flooring work is a construction service within the meaning of the German Construction Contract Procedures (VOB). Since this floor covering and its installation is a special construction, the instructions have been drawn up in accordance with the VOB/C DIN 18365, floor covering work.



Technical data	
Total thickness	7.5 mm
Thickness of the useful layer	2 mm
Basis weight	11 kg/m ²
Format tiles	615 mm x 615 mm (effective area 595 mm x 595 mm)
Hardness	95 Shore A
European classification	34-43
Walk-in loading	<2kV
Surface finish	xr™-PUR coating
Sliding resistance	DS / R10
Fire behavior	B _{f1} -s1
Light fastness	Stage 6
Dimensional stability	≤ 0,15
Residual impression	≤ 0,10
Stair castor stress	suitable
Floor heating (warm water)	Up to max. 30°C surface temperature suitable
VOC-emissions	Certified
Use class	Heavy and light commercial vehicle
Operating class	23-33-42
Backside	Drainage knobs
Material	Fiberglass reinforced PVC
Impact sound improvement measure	9 dB

Environment friendly

- 100% recyclable (at the end of the useful life, we can pick up the tiles and recycle them)

- Made in Europa





IboColor

www.ibotac.de

Germany

Ibotac GmbH & Co.KG

Duerener Straße 485

52249 Eschweiler

Fon : +49 (0) 02403 - 80 91 214